



KANSAS GEOLOGICAL SOCIETY

BULLETIN

Volume 99 Number 4

July - August 2024

Established 1925

IN THIS ISSUE

6th Biennial Field Conference for MCS of AAPG page 12-13



Your 1/8 page ad here

**Use Your KGS Library
For All Your Printing Needs**

Old photos?
Old documents?

We can scan them for you!

Robert F. Walters Digital Library

The most complete source for Kansas data

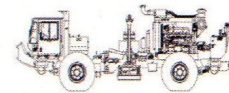
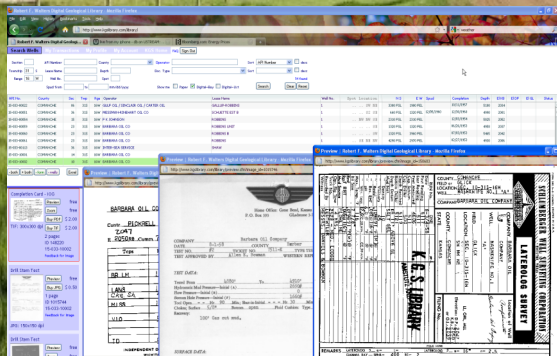
Database updated nightly

Day or Night

You can get to the data as you need it

www.kgslibrary.com

To Join: call 316-265-8676



**Proudly Celebrating 25+ Years
Acquiring Seismic Data Throughout the
Continental United States**

WICHITA

Nicolle Jausel
(316) 636-5552

Nicolle@paragongeo.com

DENVER

Kim Nordberg
(303) 888-8885

Knordberg@paragongeo.com

HOUSTON

Brent Propst
(832) 643-5158

Bpropst@paragongeo.com

OKLAHOMA CITY

Joe Broussard
(405) 213-9859

Jbroussard@paragongeo.com

website: www.paragongeo.com

We Invite You

To join the

***Kansas Geological
Foundation***

***\$50.00 membership is
tax deductible***

Call 316-265-8676

Or send checks to:

Kansas Geological Foundation

1704 S. Baehr

Wichita, KS 67209

Table of Contents

Features: **6th Biennial Field Conference of MCS (1st announcement)** **12-13**

KGS Events: **Golf Tournament September 26 Rolling Hills CC**

Larry Richardson Memorial Shooting Tournament October 25, 2024

Departments & Columns:

| | |
|--|--------------|
| KGS Tech Talks | 4 |
| Advertiser's Directory | 7 |
| In Memoriam | 15 |
| Professional Directory | 16 |
| Kansas Geological Foundation Cornerstone and KGF News | 19-21 |
| Kansas Geological Foundation Memorials | 22-24 |
| Exploration Hilights by John Morrison - IOG | 26-27 |

ON THE COVER:

**Desert Spring Along Fault
Death Valley**

Photo by Marli Miller

The Kansas Geological Society Bulletin, which is published bimonthly in electronic format, seeks short papers dealing with any aspect of Kansas geology, including petroleum geology, studies of producing oil or gas fields, and outcrop or conceptual studies. Maximum length of papers is 6 pages as they appear in the Bulletin, including text, references, figures and/or tables, and figure/table captions. Inquiries regarding manuscripts should be sent to manager@kgslibrary.com or mailed to 1704 S. Baehr, Wichita, KS 67209. Specific guidelines for manuscript submission appear in each issue of the Bulletin, which can also be accessed on-line at the Kansas Geological Society web site at <http://www.kgslibrary.com>

SOCIETY Technical Meetings

All Technical Meetings will be on Zoom

August 14, 2024

Kristen Jordan, KGS - *“Upgrades to the Oil & Gas Mapper”*

September 27, 2024

Dr. Johnson, OGS - *“Salt Plains & Brines in Western Oklahoma”*

Please remember to check the website for the most up to date information on Technical Talks

<http://www.kgslibrary.com/techtalks.cfm>

Note: For those geologists who need 30 professional development hours (pdh) to renew their licenses, there will be a sign-in sheet at each presentation and also a certificate of attendance.



The New Home of the KGS

1704 S. Baehr

KANSAS GEOLOGICAL SOCIETY



BOARD OF DIRECTORS

PRESIDENT

Doug Davis

PRESIDENT-ELECT

Seth Evenson

SECRETARY

Lori Landes

TREASURER

Doug Louis

DIRECTORS

Kimberly Black
David Barker
Preston Doll

ADVISORS

Jon Callen
Dick Jordan

BULLETIN STAFF

EDITOR

Wes Hansen (316) 772-6188

ADVERTISING

Kent Scribner (316) 640-1154

MEMORIALS

Wesley Hansen (316) 772-6188

EXPLORATION HIGHLIGHTS

John H. Morrison, III
Independent O&G (316) 263-8281

STATE SURVEY

KS Geological Survey (785) 864-3965

SOCIETY NEWS

KGS Library (316) 265-8676

MANAGER

Angela Forrest (316) 265-8676

COMMITTEE CHAIRMEN

Advertising

Kent Scribner

Advisory

Annual Banquet

Doug Davis

Bulletin

Wesley Hansen

Computer Committee

Continuing Education

Distinguished Awards

Brian Fisher

Environmental

Kent Matson

Field Trip

Jerry Honas

Fishing Tournament

Future Plans

Golf

Dave Barker

Historian

Library

Ted Jochems

Membership

Larry Friend

Nomenclature

John H. Morrison, III

Picnic

Beth Isern

Public Relations

Shooting Tournament

Seth Evenson

Technical Programs

Doug Davis

Technical Committee

Ryan Dixon

Finance Committee

Tim Hellman, Chairman

Members: Rocky Milford, Chuck Brewer, David Doyel, and Tom Funk

K.G.S. LIBRARY

PHONE 316-265-8676 FAX 316-265-1013

email: frontdesk@kgslibrary.com or

Web: www.kgslibrary.com

A.A.P.G. DELEGATES

Dennis Hedke
2025

Wesley Hansen
2025

The KGS *Bulletin* is published bi-monthly by the Kansas Geological Society, with offices at 1704 S. Baehr, Wichita, Kansas 67209 Copyright 2024, The Kansas Geological Society. The purpose of the *Bulletin* is to keep members informed of the activities of the Society and to encourage the exchange and dissemination of technical information related to the Geological profession. Subscription to the *Bulletin* is by membership in the Kansas Geological Society. Limited permission is hereby given by the KGS to photocopy any material appearing in the KGS *BULLETIN* for the non-commercial purpose of scientific or educational advancement. The KGS, a scientific society, neither adopts nor supports positions of advocacy, we provide this and other forums for the presentation of diverse opinions and positions. Opinions presented in these publications do not reflect official positions of the Society.



Nine Trucks Serving

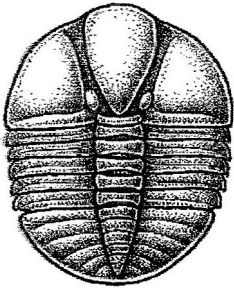
Kansas--Colorado--Texas--Nebraska--Illinois

DST's

Back Pressure testing (G1 7 G2)

Slick line services using the same Weatherford

Electronic Pressure Gauges used on DST's



1-800-728-5369

FAX 1-785-625-5620

www.trilobitetesting.com

trilobite@eaglecom.net

SHOPS LOCATED IN:

Hays, KS

Scott City, KS

Pratt, KS

Oberlin, KS

CAN YOU NAME THE CRITTER?

Sponsored by Trilobite Testing, Inc.

Is your paleo up to date?

If you know the name of the trilobite,
submit your guess via e-mail to
manager@kgslibrary.com

Remember that *Trilobite Testing* is
sponsoring your efforts, so be sure to thank
Paul Simpson the next time you see him.

**Bulletin committee members and PhD's in
Paleontology are prohibited from entering.**



Kansas Geological Society (KGS) Medallion for Scientific Distinction and Excellence

The Kansas Geological Society (KGS) Medallion for Scientific Distinction and Excellence may be given annually for peer-recognized, sustained significant scientific contributions to all facets of applied Kansas geology, including work either in Kansas or in surrounding states if the latter contributions pertain directly and significantly to Kansas geology. No more than one award may be given each year, an award does not have to be given every year, and members of the KGS Awards Committee that handle nominations for this award cannot nominate themselves for this award. The candidates need not be active KGS members, and they must be living at the time of selection. The primary consideration in the selection of a candidate shall be his or her sustained, published, significant contributions to any facet of Kansas geology. Contributions may be varied in form such as development of geologic concepts, advancement in discovery thinking, and recognized leadership in exploration concepts. Oral and/or written publications in peer-reviewed geological venues is a requisite criterion for any candidate for this award. The name of a candidate shall be presented by the Awards Committee to the KGS Board of Directors for their approval. Once approved, the recipient shall be presented an appropriate award in the form of a medallion or plaque recommended by the Awards Committee and approved by the Board of Directors at the annual business meeting of the society. This is a new award given by the KGS for distinction and achievement in Geological research in Kansas.

Awards Committee members are Sal Mazzullo and Mike Dealy

AAPG IMAGE and Section Meetings

Image 2024 August 26-29
George Brown Convention Center
Houston, TX

6th Biennial Field Conference
Mid-Continent Section of AAPG
October 18-20, 2024
Fort Hays State University
Hays, KS

ADVERTISER'S DIRECTORY

| | |
|-----------------------------------|-------------------|
| Duke Drilling | <i>page</i> 25 |
| Kansas Geological Foundation | 19 |
| Murfin Drilling Company, Inc | 25 |
| PARAGON Geophysical Services, Inc | 2 |
| Professional Directory | 16 |
| Trilobite Testing | 6 |
| Walters Digital Library | 2 |

Log in to

Walters Digital Library At

www.kgslibrary.com

Log in as our guest

and see the Society's Database

A convenient way to see what you might want to
order!

Call or email your order to:

316-265-8676

frontdesk@kgslibrary.com

ADVERTISER'S RATES: 2022

| Full Page | B&W | Color |
|--|---------|---------|
| 6 issues | \$2,000 | \$2,500 |
| 3 issues | \$1,080 | \$1,325 |
| 1 issue | \$480 | \$525 |
| 1/2 Page | | |
| 6 issues | \$1,000 | \$1,500 |
| 3 issues | \$540 | \$825 |
| 1 issue | \$225 | \$350 |
| 1/4 Page | | |
| 6 issues | \$600 | \$900 |
| 3 issues | \$325 | \$525 |
| 1 issue | \$150 | \$250 |
| 1/8 Page | | |
| 6 issues | \$300 | \$500 |
| 3 issues | \$175 | \$325 |
| 1 issue | \$75 | \$185 |
| Professional Ad (Business Card) | | |
| 6 issues | \$90 | \$180 |

Editor's Page

Dear KGS members and friends,

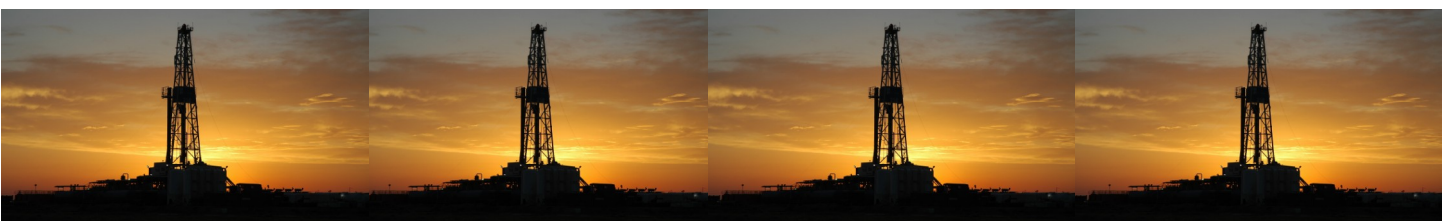
I'm restarting my old Editor's page. I did this during my first long term as editor. I'm hoping that this space will give members updates on events at the KGS.

Beth Isern set up an impromptu gathering at the Norton Brewery in downtown Wichita on June 29. By my count 20 members and friends of the KGS/KGF were there. The plan is to have these events frequently. The normal annual KGF get together may be scheduled in later August or September. Roger Martin and Beth Isern will make that announcement when set.

Two events are scheduled for September and October. Dave Barker has set up the KGS Golf Tournament at Rolling Hills CC on September 26, 2024. There will be 4 man teams. Registration and costs will be forthcoming. A big thanks to Dave for stepping up to preserve this event. Seth Evenson is planning to stage the next Annual Larry Richardson Memorial Shooting Tournament on October 25, 2024. Details are to follow. Thanks to Seth for handling this event.

I want to also remind the membership and other interested parties of the AAPG MCS field conference from October 18-20 in Hays, Kansas. Fort Hays State University is hosting the event. Preliminary info is on pages 12-13. Look for updates for this field conference in September.

Respectfully,
Wes Hansen



Save the Date September 26, 2024

KGS Golf Tournament

Rolling Hills Country Club

4 man teams

More Info to follow

Check This Space

Save the Date October 25, 2024

KGS Larry Richardson Memorial

Shooting Tournament

Look for Additional Info in September

Tales From the Wellsite

Many years ago someone suggested well site geologists should submit stories of their adventures in the field. I'm submitting one of my experiences.

Many years ago I was on a well, I believe in Ness County. The well name, operator and contractor have all be purged from my memory banks As Tyler Sanders once told me, occasionally "file not found" is the answer to a query.

This well was on a very muddy location. At the time I was driving a red Buick Riviera. Because of the mud, I left my vehicle on the county road and trudged into the shack with my gear. When the well was finished I thought perhaps a roughneck with a 4-wheel drive could pull me backwards to the closest intersection (<1/4 mile) where I could then head back a mile to the south to the neighboring paved road. One of the Mexican hands had a new to him 4-wheel drive pickup. The language barrier soon proved to be a major problem. After hooking up to the back of the Buick, I was pulled to the intersection but he failed to stop. Instead he pulled me backwards at about 40 mph for a mile. My car swung back and forth on the muddy road, occasionally sliding into the ditch missing pipeline markers. I hollered, honked my horn repeatedly as my life passed before my eyes. I fully expected to be slammed into the back of his pickup. Divine providence intervened as my car stopped safely. My panic and anger dissipated rapidly. My car was unhooked and I preceded home safely.

Wes Hansen

2024 KGS Board

President - Doug Davis

VP-President Elect - Seth Evenson

Secretary - Lori Landes

Treasurer - Doug Louis

Directors - Dave Barker Kimberly Black Preston Doll

**We Invite You
To join**

***Kansas
Geological
Foundation***

***\$50.00 membership is
tax deductible***

***Call 316-265-8676
Or send checks to:
Kansas Geological Foundation
1704 S. Baehr
Wichita, KS 67209***

Your Company

1/4 page ad

here

An Open Invitation to Young Geologists to Join AAPG

I would like to extend a special invitation to recent graduates and other young geological professionals to join AAPG. There are many young geologists outside the Wichita area that I have never met. They may work out of Great Bend or Hays, Kansas working with smaller oil and gas producers or working on their own as well site geologists. Kansas does have a future for the foreseeable future. The time is now to meet others from larger regional companies to forge a relationship for future employment. Young minds will be needed to replace those retiring and that other bad option.

I joined AAPG late in my career, much to my regret. I now serve voluntarily as a delegate for the Mid-Continent Section representing the Kansas Geological Society.

Respectfully yours,

Wesley D. Hansen Bulletin Editor and AAPG Delegate



2024 AAPG Midcontinent Section Biennial Field Conference

**"The Cretaceous Western Interior Seaway: Depositional
Environments and Paleontology"**



**DEPARTMENT OF GEOSCIENCES,
FORT HAYS STATE UNIVERSITY, HAYS KS, 67601**



18 - 20 October, 2024

**THE SIXTH BIENNIAL FIELD CONFERENCE
MID-CONTINENT SECTION AAPG
OCTOBER 18-20, 2024
GEOSCIENCES DEPARTMENT
FT. HAYS STATE UNIVERSITY
*“THE CRETACEOUS WESTERN INTERIOR SEAWAY:
DEPOSITIONAL ENVIRONMENTS AND PALEONTOLOGY”***

Friday Oct. 18

Registration 10:00 AM - 6:00 PM

Tours of Geosciences Department 10:00 AM - 4:00 PM

Student poster presentation and competition 10:00 AM - 4:00 PM

Keynote Speakers: 1:30 - 4:30 PM

Nathan A. Randolph, President MCS AAPG

Deborah K. Sacrey, President AAPG

Dr. Laura Wilson, Chief Curator Sternberg Museum

Other Speakers

Ice Breaker: 5:00 - 7:00 PM. Hors d'oeuvres will be served. Cash Bar

Saturday Oct. 19

Loading buses (designated area) 7:30 - 8:00 AM, box lunch provided

Field excursion 8:00 AM - 5:00 PM return to Hays, KS

Cretaceous Outcroppings

Monument Rocks

Little Jerusalem Badlands State Park

Conference Dinner 7:00 - 8:30 PM

Sunday Oct. 20 Sternberg Museum of Natural History 7:45 AM- 12:00 Noon

Additional info to follow

Robert F. Walters Digital Library

Log in as our Guest

username: guest

password: guest



316-265-8676

**Let Us Print Your Geo Reports
And Save Your Time For Finding More Oil & Gas**

Top Quality Color Printing For Our Membership

Email your files to: kgsorders@gmail.com

**Get Your Maps copied at the KGS library
We can scan, copy, and print up to 44" wide**

Color or Black & White

Solid Color @ \$4.00/sq. ft.

Line maps with color @ \$3.00/sq. ft.

In Memoriam

KGS and Industry Members Lost in 2023 and 2024

2023

Bill C. Romig

Dean Britting

Robert Llewellyn

Willis Nigh

Richard Cornett

Jim Reilly

Robert “Bob” Cowdery

Chuck Latham

I. Wayne Woolsey

2024

Paul Ramondetta

George Jones

Cecil O’Brate

Bob McCann



PROFESSIONAL DIRECTORY

Kirk Rundle
Consulting Geophysicist

3D Seismic Design, Acquisition to Processing QC.,
Interpretation and Analysis, Subsurface Integration
7340 W. 21st N., Ste. 100
Wichita, Kansas 67205

Office: 316-721-1421 Fax: 316-721-1843
Email: kirk@rundlegeo.com

Covey - The Well Watchers

“One Thousand Wells and Counting”

Curtis E. Covey Wellsite Petroleum Geologist
Gas Trailer Cell: 316-217-4679 Office: 316-776-0367
Email: wellsitegeol@gmail.com
6548 Bedford Circle Derby, Kansas 67037
Gas Detection Trailer & Internet/Phone Communications



GRAVITY OIL
LLC

ELI J. FELTS
CONSULTING PETROLEUM GEOLOGIST

316.204.5059 EJJELTS47@GMAIL.COM

- VERTICAL & HORIZONTAL WELL-SITE SUPERVISION
- PROSPECT GENERATION & EVALUATION
- WELL-LOG ANALYSIS
- DIGITAL MAPPING SERVICES & GEOLOGICAL REPORTS
- KCC & COMPLIANCE SPECIALIST
- PROFESSIONALLY INSURED

COMPETITIVE PRICING & STATE OF THE ART SERVICES YOU CAN COUNT ON
CALL TODAY & RECEIVE (1) FREE DAY WELL-SITE TO NEW CLIENTS

IOGSI INDEPENDENT
OIL & GAS SERVICE, INC.
Digital Well Data You Can Trust

JOHN H. MORRISON, III
President

www.IOGsi.com Phone: 316-263-8281
3909 N. Sweet Bay St. Fax: 316-263-0874
Wichita, Kansas 67226-3501 Email: jmorrison@iogsi.com

Special offer to those who actually read
the online bulletin
Wes Hansen will buy the first round on a
date and place to be announced later.
Text IMIN to 316-772-6188
First 15 responders only

Your business card ad
Could be right here
For only \$90/year

ROGER L. MARTIN

Independent Petroleum Geologist

200 E 1st St, Ste 405, Wichita, KS 67202

Cell: 316-833-2722 Office: 316-250-6970
KS Field Cell: 316-655-1227

Email: rogermartingeo@yahoo.com

WESLEY D. HANSEN

Consulting Geologist

Well site Supervision • Geologic Studies
PO Box 46 Whitewater, KS 67154
Office/Mobile: (316) 772-6188
whansen4651@sbcglobal.net
Kansas - Colorado - Nebraska
42 Continuous Years in the Oil Patch

M. ((Brad))ford Rine, Geologist

Licensed, Registered, Certified

| | |
|--|--|
| PROSPECT EVALUATION | PROSPECT ORIENTATION |
| WELL-SITE SUPERVISION | DRLG/COMPL CONSULTATION |
| RESERVOIR STUDIES | PROPERTY EVALUATION |
| EXPERT TESTIMONY | BANJO PICKER |
| 100 South Main Suite #415 Wichita, Kansas 67202 | Email: rinemb@sbcglobal.net Office & Cell: (316) 250-5941 |

MELLAND ENGINEERING, INC.

Petroleum Engineering & Geological Consulting

James E. Melland, P.E., P.G.

President

Office: (620) 241-4621 Fax: (620) 241-2621
jamesm@mellandengineering.com
www.mellandengineering.com
P.O. Box 841, McPherson, KS 67460-0841

Macklin Armstrong

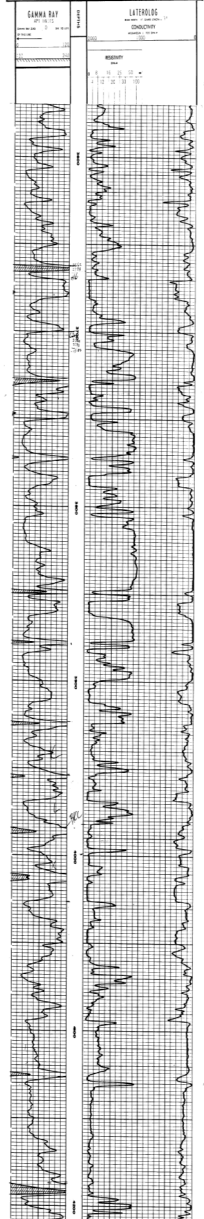
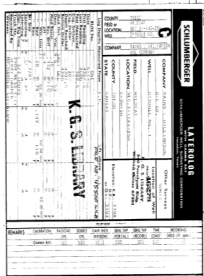
Consulting Geologist

Kansas - Colorado - Nebraska

Wellsite Supervision Prospect Evaluation
armstrong.mac@gmail.com
316-209-5047

Your business card ad
Could be right here
For only \$90/year

*The KGS Library is pleased to
announce a new service*



Creating
LAS files
from our logs
or yours

**\$20.00 per
curve!!**

**Quick
turn-around**

Send us your log file
or tell us which of
ours you would like
converted.

316-265-8676



**Kansas Geological
Foundation
Video / DVD Collection**

The KGF has an extensive
collection of
videos available for check-out at
no charge.

Only pay for shipping back.

These are ideal for classroom or
general public viewing.

See the web for titles &
descriptions

www.kgfoundation.org

Call 316-265-8676

Ask for Rhonda to check
out videos

A shout out to Kansas Oil and Gas Industry

Service Companies

Oil prices are recovering nicely with WTI about \$80 per barrel and Kansas posted price about \$70 per barrel

Now is the time to resume advertising in the KGS Bulletin

Let our several hundred members know that your company is still active and ready to work.

Your half page ad would look great here.

Color or black and white

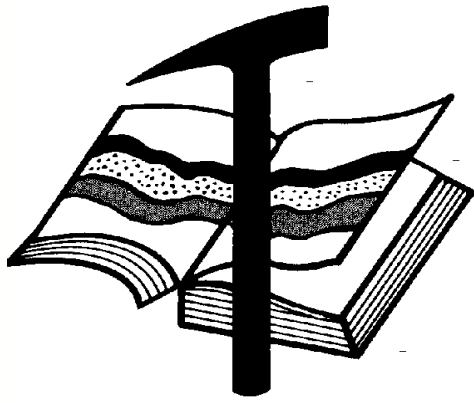
Contact Kent Scribner at 316-640-1154

KGS members please check your files

Fellow KGS members, please remember to check your files of elogs and geologist reports against the KGS paper library and the WDL before discarding them. I was contacted by John Morrison recently about a well I watched years ago that had some tops and DST info missing from his completion card. I took pics from my geo report of tops and DST results and sent them to John to update his card data. If I was to go through all of my files, I'm sure I have many logs and geo reports that are not in the files of either the KGS paper or the WDL. Before I hang things up in my career, I vow to go through all of my data and get it donated and scanned.

KCC rules allow an operator to hold information confidential for a two year period. As long as the well in question is older than the two year period, one can release the data. If one has concerns about alienating a client, of course, feel free to ask for permission.

Wes Hansen



Kansas Geological Foundation

Web Site: www.kgfoundation.org

**212 North Market
Wichita, Kansas 67202**

A not-for-profit educational and scientific corporation

GOALS:

- promote geology and earth science
- preserve geological records
- establish memorials and endowments
- support field trips and seminars
- financial aid and grants to students

PLEASE HELP SUPPORT THE FOUNDATION

Kansas Geological Foundation Services

The Kansas Geological Foundation provides the following services as a part of the organization's commitment to educate the public regarding earth science.

Speaker's Bureau

A list of speakers available to talk about various aspects of geology may be obtained by contacting Wes Hansen at the KGS Library, 265-8676. This service is free to the public.

DVD/Videotape Library

The KGF maintains a DVD & videotape library focused primarily on the various fields of earth science. These tapes may be checked out without charge by the public. To obtain a list of tapes, please contact the KGS Library, 1704 S, Baehr Wichita, KS 67209 or call Wes Hansen at 265-8676.

The Kansas Geological Foundation was founded in March, 1989 as a not-for-profit corporation under the guidelines of section 501(c)(3) of the tax code to provide individuals and corporations the opportunity to further the science of geology. It is dedicated to providing charitable, scientific, literary and educational opportunities in the field of geology for the professional geologist as well as the general public.

KGF can receive in-kind donations through which the donor may receive a tax deduction. Of equal importance, the KGF provides the financial resources to sort, process and file this data at the KGS library. If you have a donation to make, please contact the KGF at 265-8676.

Your tax-deductible membership donation helps to defray the cost of processing donations and to support public education programs about the science of geology. Annual membership begins at \$50.00 per year. Donations of \$100.00 or more are encouraged through the following clubs:

| | |
|-------------------------|------------------|
| Century Club | \$ 100 to \$ 499 |
| \$500 Club | \$ 500 to \$ 999 |
| Millennium Club | \$1000 to \$5000 |
| President's Club | \$5000 and over |

Kansas Geological Foundation

Kansas Geological Foundation News

Fall 2024 KGF Scholarship Recipients

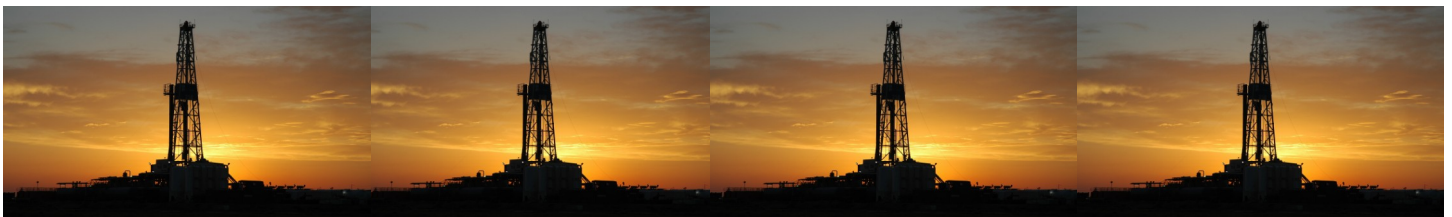
| Name | University | Scholarship | Amount |
|--------------------|--------------------------|--------------------|---------------|
| Gyasi Kobina | Kansas State University | KGF Scholarship | \$1000.00 |
| Deborah Agbamu | Kansas State University | KGF Scholarship | \$1000.00 |
| Samantha Villasana | Kansas State University | KGF Scholarship | \$500.00 |
| Makenna Roths | Wichita State University | KGF Scholarship | \$1000.00 |
| Mitchell Baker | Wichita State University | KGF Scholarship | \$500.00 |

KGF Grants

Sarah Lamm, PhD candidate at KU

\$2500.00 for Rocks and Rockets Event in Colby

August 2024



Kansas Geological Foundation News

Students: The KGF awards scholarships each December and May. Check with your department chairs for applications. You must submit complete applications by the deadline.

Scholarship Applications for the Fall semester will be due by May 1, 2024.

Grants to help with research on Kansas related geology are also considered for aid.

The Kansas Geological Foundation Needs You!



By permission

The KGF provides the financial resources to sort, process and file, in-kind donations of geological data at the KGS library. Due in large part to the KGF this unique and rare well of information is being made available to all. Please consider telling your company management and colleagues about the benefits of a library that continues expanding in part because of the KGF.

We very much value and need your financial support.

KGF Officers and Board Members

Executive Director **Kerry Parham**
President - **Tom Dudgeon**
Vice President -
Treasurer - **Jacob Dyson**
Secretary - **Beth Isern**

Board Members

Brad Rine (24) **Dennis Hedke (24)**
Nick Hixon (25) **Kent Crisler**

Scholarships - Nick Hixson
Grants - Dennis Hedke
Publicity - Wes Hansen

PLEASE SUPPORT THE INTEGRATION PROJECT BY DONATING FINANCIALLY TO THE KANSAS GEOLOGICAL FOUNDATION

Kansas Geological Foundation Memorials

| KGS Member | Date Deceased | Memorial Established |
|-------------------------|---------------|----------------------|
| Dan Bowles | 09/89 | 1990 |
| John Brewer | 10/89 | 1990 |
| George Bruce | 08/89 | 1990 |
| Robert Gebhart | 01/90 | 1990 |
| Ray Anderson, Jr. | 11/90 | 1990 |
| Harold McNeil | 03/91 | 1991 |
| Millard W. Smith | 08/91 | 1991 |
| Clinton Engstrand | 09/91 | 1991 |
| M.F. "Ted" Bear | 10/91 | 1991 |
| James & Kathryn Gould | 11/91 | 1991 |
| E. Gail Carpenter | 06/91 | 1993 |
| Benton Brooks | 09/92 | 1992 |
| Robert C. Armstrong | 01/93 | 1993 |
| Nancy Lorenz | 02/93 | 1993 |
| Norman R. Stewart | 07/93 | 1993 |
| Robert W. Watchous | 12/93 | 1993 |
| J. George Klein | 07/94 | 1994 |
| Harold C.J. Terhune | 01/95 | 1995 |
| Carl Todd | 01/95 | 1995 |
| Don R. Pate | 03/95 | 1995 |
| R. James Gear | 05/95 | 1995 |
| Vernon Hess | 06/95 | 1995 |
| E. K. Edmiston | 06/95 | 1995 |
| Jack Rine | 07/95 | 1995 |
| Lee Cornell | 08/95 | 1995 |
| John Graves | 10/95 | 1995 |
| Wilson Rains | 10/95 | 1995 |
| Heber Beardmore, Jr. | 09/96 | 1996 |
| Elmer "Lucky" Opfer | 12/96 | 1996 |
| Raymond M. Goodin | 01/97 | 1997 |
| Donald F. Moore | 10/92 | 1997 |
| Gerald J. Kathol | 03/97 | 1997 |
| James D. Davies | 08/88 | 1997 |
| R. Kenneth Smith | 04/97 | 1997 |
| Robert L. Dilts | 05/97 | 1997 |
| Delmer L. Powers | 06/72 | 1997 |
| Gene Falkowski | 11/97 | 1997 |
| Arthur (Bill) Jacques | 01/98 | 1998 |
| Bus Woods | 01/98 | 1998 |
| Frank M. Brooks | 03/98 | 1998 |
| Robert F. Walters | 04/98 | 1998 |
| Stephen Powell | 04/98 | 1998 |
| Deane Jirrels | 05/98 | 1998 |
| William G. Iversen | 07/98 | 1998 |
| Ann E. Watchous | 08/98 | 1998 |
| W.R. "Bill" Murfin | 09/98 | 1998 |
| Donald L. Hellar | 11/98 | 1998 |
| Joseph E. Rakaskas | 01/99 | 1999 |
| Charles W. Steincamp | 02/99 | 1999 |
| Robert and Betty Glover | 10/96 | 1998 |
| Howard E. Schwerdtfeger | 11/98 | 1999 |
| W. W. "Brick" Wakefield | 03/99 | 1999 |
| V. Richard Hoover | 01/00 | 2000 |
| Warren E. Tomlinson | 01/00 | 2000 |
| James A. Morris | 01/00 | 2000 |
| Eric H. Jager | 03/00 | 2000 |
| Kenneth W. Johnson | 03/00 | 2000 |

Kansas Geological Foundation Memorials

| KGS Member | Date Deceased | Memorial Established |
|----------------------------|---------------|----------------------|
| Dean C. Schaaque | 03/00 | 2000 |
| Fred S. Lillibridge | 05/00 | 2000 |
| Jerry A. Langrehr | 07/00 | 2000 |
| Clark A. Roach | 07/00 | 2000 |
| Floyd W. "Bud" Mallonee | 10/00 | 2000 |
| Ralph W. Ruuwe | 09/00 | 2000 |
| Robert L. Slamal | 02/01 | 2001 |
| Jerold E. Jespersen | 06/01 | 2001 |
| William A. Sladek | 06/01 | 2001 |
| Harlan B. Dixon | 06/01 | 2001 |
| Edward B. Donnelly | 08/01 | 2001 |
| Richard P. Nixon | 02/02 | 2002 |
| Robert W. Frensley | 12/01 | 2002 |
| Gerald W. Zorger | 01/02 | 2002 |
| Don L. Calvin | 03/02 | 2002 |
| Claud Sheats | 02/02 | 2002 |
| Merle Britting | 2002 | 2002 |
| Harold Trapp | 11/02 | 2002 |
| Donald M. Brown | 11/02 | 2003 |
| Elwyn Nagel | 03/03 | 2003 |
| Robert Noll | 09/03 | 2003 |
| Benny Singleton | 09/03 | 2003 |
| Jay Dirks | 2003 | 2003 |
| J. Mark Richardson | 02/04 | 2004 |
| John "Jack" Barwick | 02/01 | 2004 |
| Richard Roby | 03/04 | 2004 |
| Ruth Bell Steinberg | 2004 | 2004 |
| Gordon Keen | 03/04 | 2004 |
| Lloyd Tarrant | 05/04 | 2004 |
| Robert J. "Rob" Dietterich | 08/96 | 2004 |
| Mervyn Mace | 12/04 | 2004 |
| Donald Hoy Smith | 04/05 | 2005 |
| Richard M. Foley | 06/05 | 2005 |
| Wayne Brinegar | 06/05 | 2005 |
| Charles B. Moore | 09/96 | 2005 |
| Jack Heathman | 05/06 | 2006 |
| Charles Kaiser | 09/06 | 2006 |
| Rod Sweetman | 08/06 | 2006 |
| Karl Becker | 10/06 | 2006 |
| Frank Hamlin | 10/06 | 2006 |
| Marvin Douglas | 12/06 | 2006 |
| Robert W. Hammond | 04/07 | 2007 |
| Eldon Frazey | 04/07 | 2007 |
| Pete Amstutz | 05/07 | 2007 |
| Charles Spradlin | 05/07 | 2007 |
| Donald R. "Bob" Douglass | 09/07 | 2007 |
| Vincent Hiebsch | 11/07 | 2007 |
| Glen C. Thrasher | 03/08 | 2008 |
| Peg Walters | 06/08 | 2008 |
| Theodore "Ted" Sandberg | 07/08 | 2008 |
| James Ralstin | 11/08 | 2008 |
| Earl Brandt | 04/09 | 2009 |
| Walter DeLozier | 05/09 | 2009 |
| Don D. Strong | 1/10 | 2010 |
| John Stone | 02/10 | 2010 |
| Craig Caulk | 03/10 | 2010 |
| Joseph E. Moreland, Jr. | 03/10 | 2010 |

Kansas Geological Foundation Memorials

| KGS Member | Date Deceased | Memorial Established |
|----------------------------|---------------|----------------------|
| Gene Garmon | 03/10 | 2010 |
| James F. Dilts | 05/10 | 2010 |
| Jerry Pike | 05/10 | 2010 |
| Donald Hollar | 06/10 | 2010 |
| Delbert Costa | 08/10 | 2010 |
| John Tanner | 08/10 | 2010 |
| William (Bill) Owen | 09/10 | 2010 |
| Harold (Hal) Brown | 10/10 | 2010 |
| Edmund G. Lorenz | 11/10 | 2010 |
| Thomas E. Black | 05/11 | 2011 |
| Wayne E. Walcher | 07/11 | 2011 |
| Henry F. Filson | 07/11 | 2011 |
| Thomas Ray | 07/11 | 2011 |
| Edgar E. Smith | 09/11 | 2012 |
| Marilyn Messinger | 06/13 | 2013 |
| Micheal Mitchell | 09/13 | 2013 |
| Orvie Howell | 11/13 | 2013 |
| James Thompson | 11/13 | 2013 |
| Dick Rowland | 09/13 | 2014 |
| Robbie Thompson | 12/13 | 2014 |
| Kris Kennedy | 04/14 | 2015 |
| Annette Hedke | 02/15 | 2015 |
| James Devlin | 04/15 | 2015 |
| Robert Gensch | 09/15 | 2015 |
| Jerald Rains | 05/16 | 2016 |
| Max Houston | 05/16 | 2016 |
| Robert "Gus" Messinger | 01/17 | 2017 |
| Jimmy Wayne Gowens | 04/17 | 2017 |
| Walter H. Martz Jr. | 01/18 | 2018 |
| Gary Sandlin | 01/17 | 2018 |
| Douglas McGinness | 12/16 | 2018 |
| Allen Siemens | 06/18 | 2018 |
| Ernest R. "Ernie" Morrison | 09/18 | 2018 |
| E. G. "Elbie" McNeil | 12/18 | 2018 |
| Robert Maxwell (Bob) Euwer | 1/19 | 2019 |
| J. Fred Hambright | 12/18 | 2019 |
| W. Lynn Watney | 7/19 | 2019 |
| Byron Hummon | 12/18 | 2019 |
| Mike Raymond | 11/19 | 2019 |
| James Roberts, Jr. | 3/19 | 2019 |
| Herb Johnson | 8/19 | 2020 |
| Lloyd Parrish | 2/20 | 2020 |
| Bruce Reed | 5/20 | 2020 |
| Bob Scull | 6/20 | 2020 |
| Thornton E. Anderson | 7/20 | 2020 |
| Don Shawver | 12/16 | 2020 |
| Phillip Hart | 12/20 | 2021 |
| Timothy Lauer | 05/21 | 2021 |
| Fredrick Stump | 09/21 | 2021 |
| Larry J. Richardson | 10/21 | 2021 |
| Robert Cowdery | 12/23 | 2023 |

18 Drilling Rigs
To depth of 9,500 ft.



WESTERN KANSAS
SOUTHERN NEBRASKA
EASTERN COLORADO
OKLAHOMA PANHANDLE

For contract information contact:

William Murfin
Drilling Manager

316-258-8888 (Direct)
316-267-3241 (Main)

250 N. Water, Ste. 300
Wichita, KS 67202

DUKE
DRILLING COMPANY

ROTARY DRILLING CONTRACTOR

620 Hubbard PO Box 823
Great Bend, KS 67530

100 S. Main, Ste. 410,
Wichita, KS 67202

Your Company

1/8 page ad here

BULLETIN CONTENT POLICY

Effective January 1, 2018, only ads for service companies and geologists offering their services will be permitted in the KGS Bulletin. Furthermore, only content of geologic interest or official KGS functions (technical talks, annual banquet, golf tourney, picnic etc.) will be permitted in this bulletin. This policy is in keeping with maintaining a professional standard for this publication. Any interpretation of this policy rests solely with the editor of this bulletin.



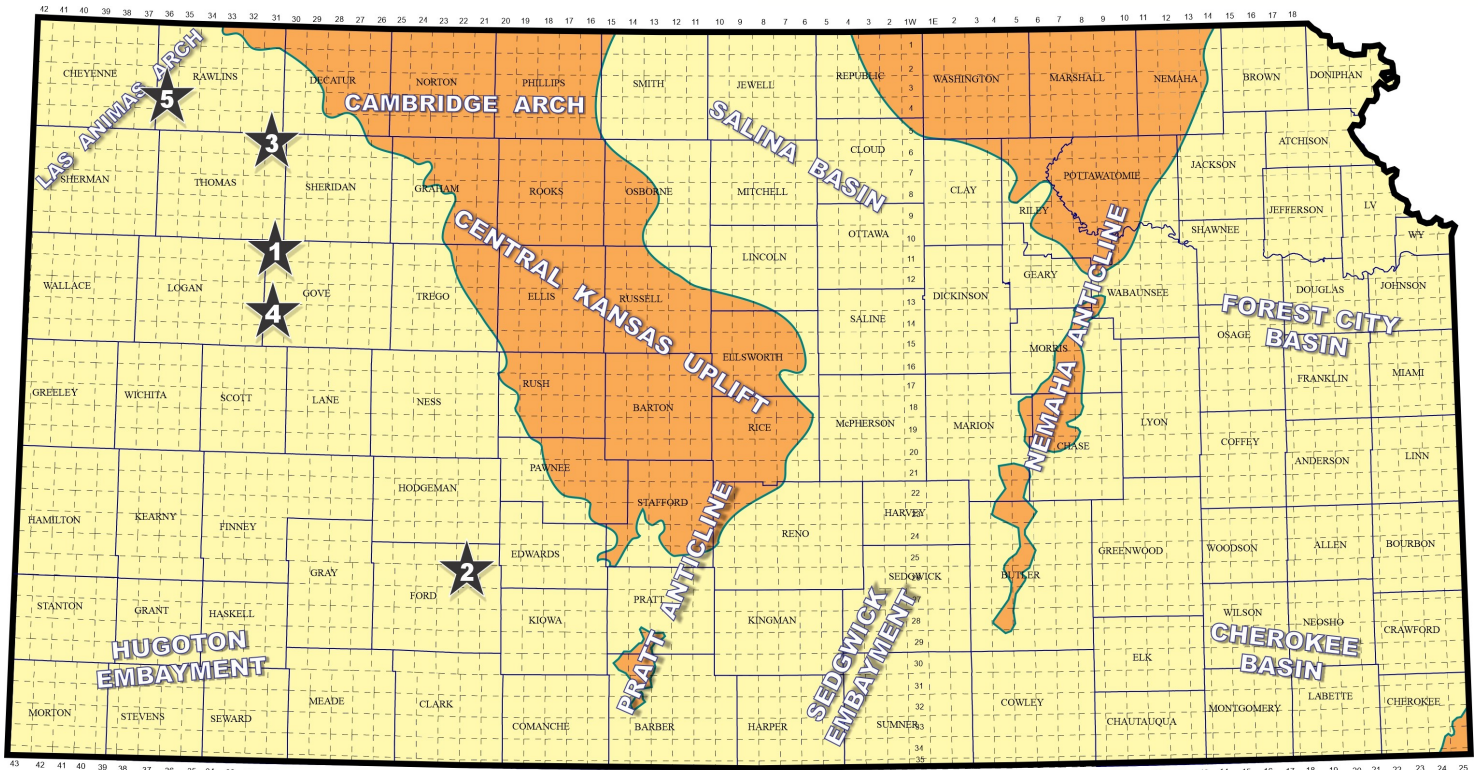
AAPG Needs You!

Professional geoscientists, share your world!

The Mid Continent Section has 17 AAPG Student Chapters, but only 3 Visiting Geoscientists...which makes it almost impossible to have a professional geoscientist visit to each school at least once a year or even once every two years. The aim of AAPG's program is to give students a flavor of a professional life in energy resources. It also hopes to encourage dialog between industry and academia. To be a Visiting Geoscientist bearing the AAPG flag, you are asked to have at least 5 years of experience and make at least one visit per year to a university. It can be a school with an AAPG Student Chapter, or a college/university without one. Your choice.

The Mid Continent schools with Student Chapters are: Missouri University, Fort Hays State University, Iowa State University, Kansas State University, Missouri State University, University of Nebraska, Northwest Missouri State University, Oklahoma State University, University of Oklahoma, University of Arkansas, University of Iowa, University of Kansas, University of Missouri, Columbia University of Tulsa and Wichita State University.

Contact Robbie Gries, co-Chair VGP committee, Denver, if you are interested in learning more. rrgries@aol.com



Map courtesy of Marc Summerville

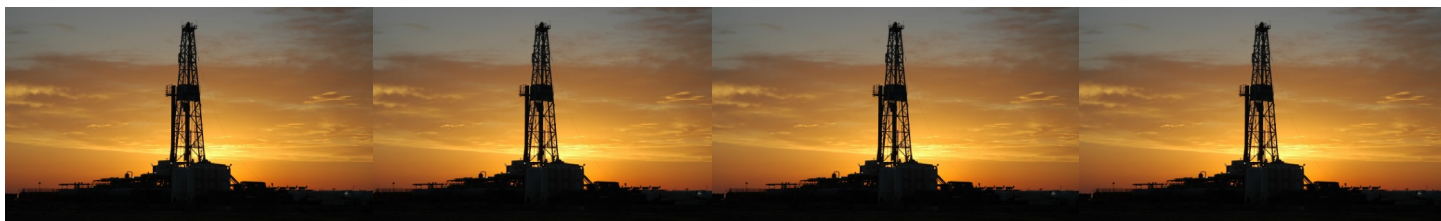
1. Red Oak Energy Inc, Wichita (KS), is producing an undisclosed amount of crude at their #1-29 Stephens Trust in Gove County. The wildcat well found new oil reserves in the Marmaton (Myrick Station Limestone). Drillsite is located in the NE/4 of section 29- T11s- R31W, about four miles south and eight miles west of Grinnell, Kansas. Murfin Drilling's Rig #22 drilled the well to a total depth of 4629 ft. Completion details remain confidential at this time. The new pool has not been named. The "Penny SE" oil field (1985), spotted in section 21- T11s- R31W, nearly one mile from Red Oak's latest discovery, also produces oil from the Myrick Station. (Ref: API 15-063-22443)

2. Thoroughbred Associates LLC, Wichita (KS), has opened a new unnamed oil field in Ford County. The #1-24 Heeke, located in the NE/4 of section 24- T26s- R22W, began pumping crude in early June. Productive reservoir was discovered in the Pawnee limestone member of the Marmaton formation. Completion details are confidential. Wellsite lies about five miles south and 4 miles east of the City of Spearville. Duke Drilling tools were used to bottom the well at a total depth of 4950 ft. Closest recognized production in the area lies two and one-half miles away in the "Peinther" pool which was established in 1977 with Mississippian oil pay) (Ref: API 15-057-21102)

3. American Warrior Inc, Garden City (KS), has discovered oil deposits in the Myrick Station Limestone at the #1-28 Mann, located in the SW/4 of section 28- T6s- R31W, in Thomas County. The wildcat well was drilled to a total depth of 4,635 ft. First production started on June 12th at site located two miles north and two miles west of Rexford, Kansas. Completion information is confidential. The new pool has not been named. The Mann lease lies two miles south of the recently established "Patricia " pool, SW/4 section 6- T6s- R31W, which American Warrior also discovered in March this year. The Patricia pool also produces oil from the Myrick Station. (Ref: API 15-193-21127)

4. ARP Operating LLC, Denver (CO), is producing oil from the Lansing - Kansas City formation at the #1 Sharp in Gove County. The new "Gaeland Township East" pool discovery well was drilled to a total depth of 4,664 ft at site in the SE/4 of section 3- T14s- R31W. Closest recognized production in the area lies nearly one mile to the east in the "Gaeland Township" pool that has produced over 80,000 bbl of oil from the LKC, Marmaton, Cherokee, Morrow, and Mississippian zones since its discovery in 2009. Details on the #1 Sharp well is confidential. Field area is about fifteen miles southwest of Gove, Kansas. (Ref: API 15-063-22439)

5. Downing - Nelson Oil Company, Inc, Hays (KS), has discovered new Cherokee Limestone oil reserves at the #1-27 HFI, NW/4 of section 27- T4s- R36W in Rawlins County. The well establishes the "House Farms" field that is located approximately seven miles southeast of the town of McDonald, Kansas. Completion details remain confidential. The well was drilled to a total depth of 4989 ft. The well lies approximately two miles from nearest production in the "House" field, which Downing - Nelson discovered in 2023 with Marmaton and Cherokee pay. (Ref: API 15-153-21324)



July 2024

| Sun | Mon | Tue | Wed | Thu | Fri | Sat |
|-----|-----|----------------|-----------------|-----|-----|-----|
| | 1 | 2 | 3 | 4 | 5 | 6 |
| 7 | 8 | 9 KGS Board | 10 | 11 | 12 | 13 |
| 14 | 15 | 16 | 17 KGF Board | 18 | 19 | 20 |
| 21 | 22 | 23 | 24 | 25 | 26 | 27 |
| 28 | 29 | 30 | 31 | | | |

August 2024

| Sun | Mon | Tue | Wed | Thu | Fri | Sat |
|-----|-----|-----------------|-----------------|-----|-----|-----|
| | | | | 1 | 2 | 3 |
| 4 | 5 | 6 | 7 | 8 | 9 | 10 |
| 11 | 12 | 13 KGS Board | 14 | 15 | 15 | 17 |
| 18 | 19 | 20 | 21 KGF Board | 22 | 23 | 24 |
| 25 | 26 | 27 | 28 | 29 | 30 | 31 |